

# PROJECT SEARCH



Applications open  
19<sup>th</sup> Jan 2026

Jan 2026 Info For Potential Applicants

## What is Project Search & Who is it For?

DFN Project Search helps young people aged 17-29 find meaningful employment. It is a 9 month employability course, delivered in partnership with Ayrshire College, Girvan Youth Trust and National Trust for Scotland. It is designed to support young people with learning difficulties, self confidence issues, neurodevelopmental differences and/or mental health challenges. Young people are supported in hands on work experience placements within South Ayrshire and coached with application and interview skills to help them find employment at the conclusion of the programme.

### Work Placement Opportunities

The course runs 5 days a week. Mon-Thurs students are at their chosen work placements and on Friday they have a classroom day completing college work. We can support with travel but becoming confident at independent travel using public transport is a big part of the course too.

We have various placements options which include:

- Culzean (cafe, housekeeping, rangers, gardens, Dolphin House)
- NHS Ayr (admin, porter, domestic)
- Retail opportunities such as HMV and Oxfam
- Hospitality (Burns Museum, local cafes) and many more!

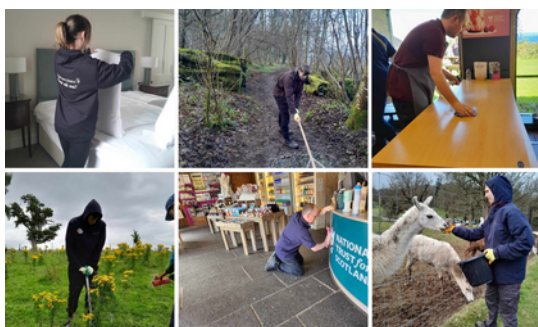


## Interested? Here's how the application process works...

Applications are via Ayrshire College website - just look for 'Project Search'

Once your application is received, you will have an informal face to face chat with our team and be invited to a recruitment day at Ayrshire College campus in Ayr where you'll get to try out some of the placements tasks. After that we'll be able to let you know if you have been successful in securing a place. Places are limited (only 10!) so the earlier you apply the better.

Our team can support with applications - just get in touch



### Important Points to Note

- The course runs from August to June. Apply now for August 2026 start.
- There are 4 different placement rotations throughout the course. Meaning young people get to try 4 different roles.
- Placements last 6-8 weeks each
- Young people will complete a SCQF Level 4 in Employability
- Formal diagnosis of any learning difficulty etc is not required
- 2 dedicated staff members on hand every day to support



For more info - contact our Job Coach Claire Stewart

[claire@zlgirvan.org.uk](mailto:claire@zlgirvan.org.uk)

07963352880